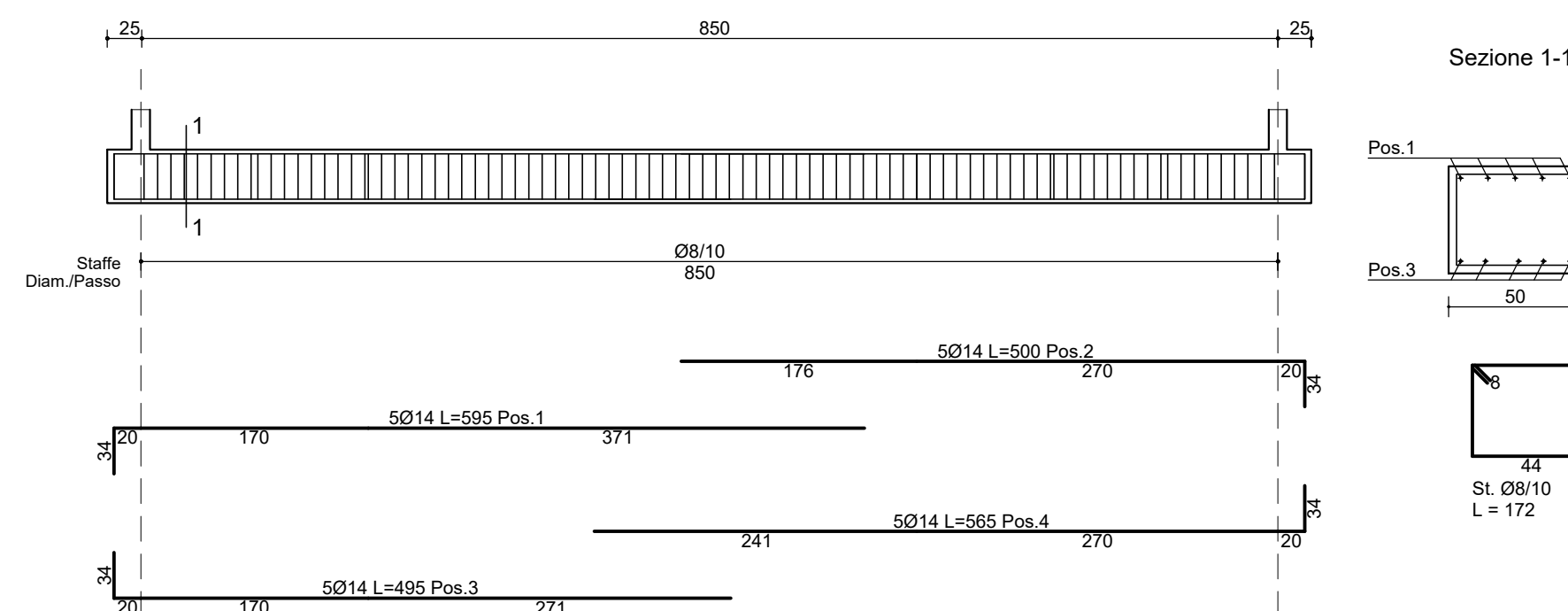
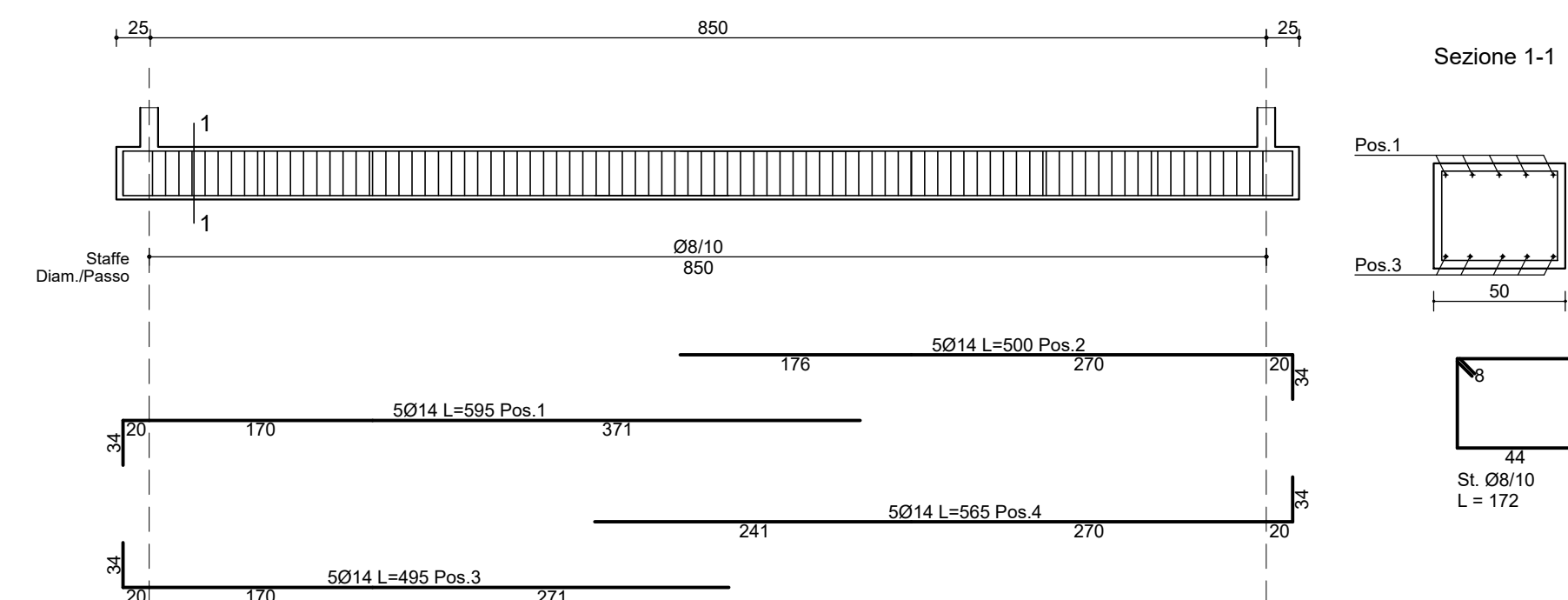


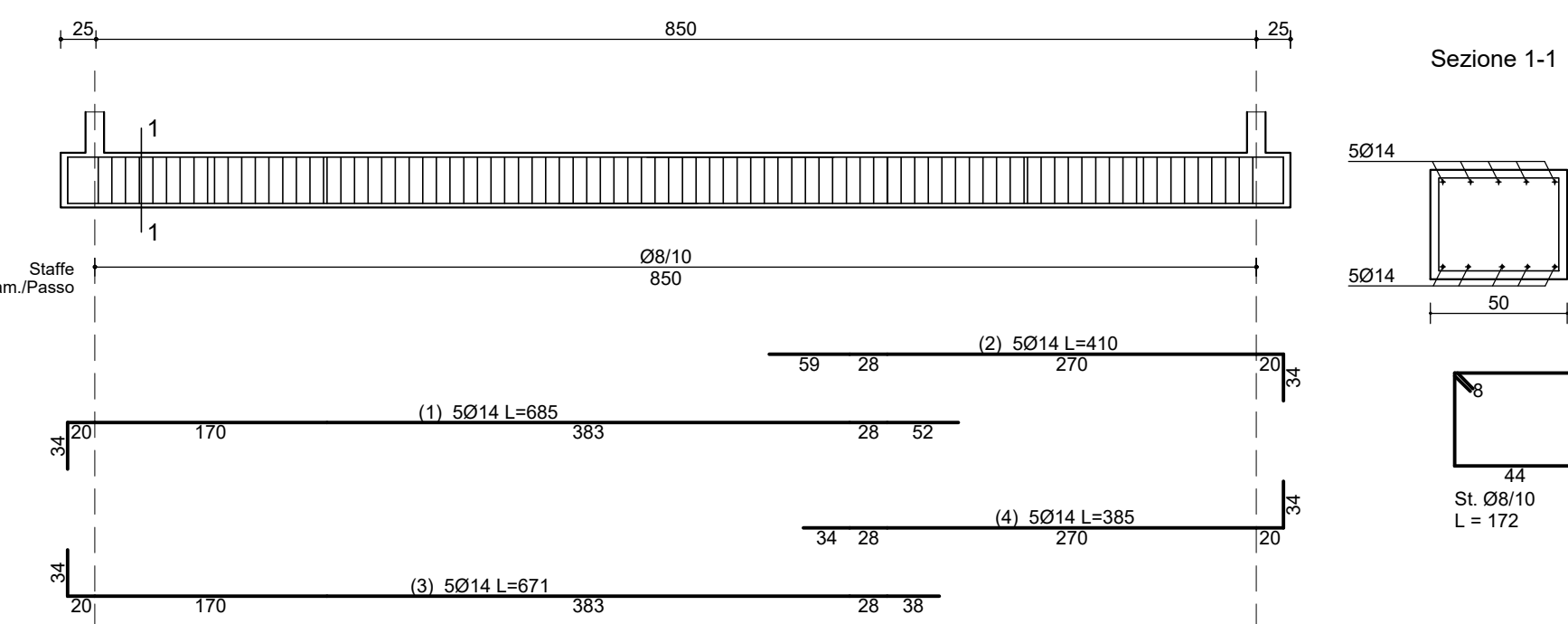
**TRAVE FILO S 19-20**  
scala 1:50



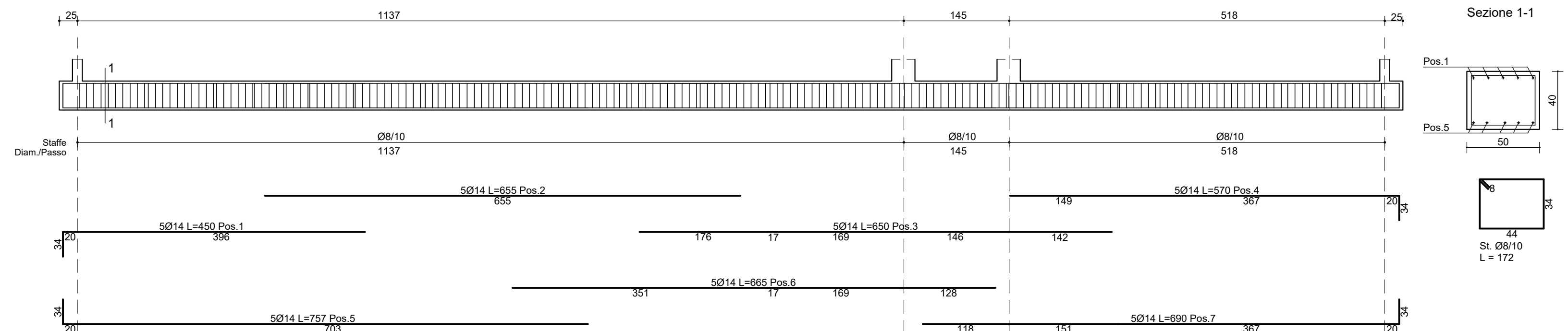
**TRAVE FILO S 22-23**  
scala 1:50



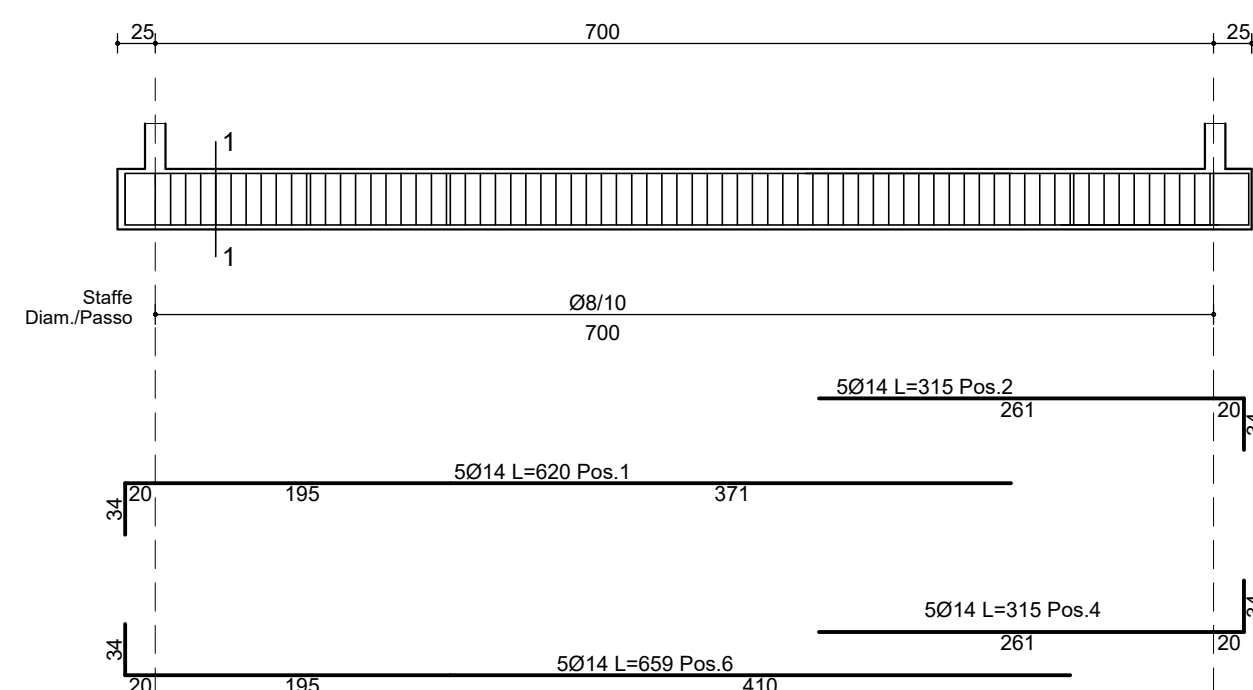
**TRAVE FILO S 24-26**  
scala 1:50



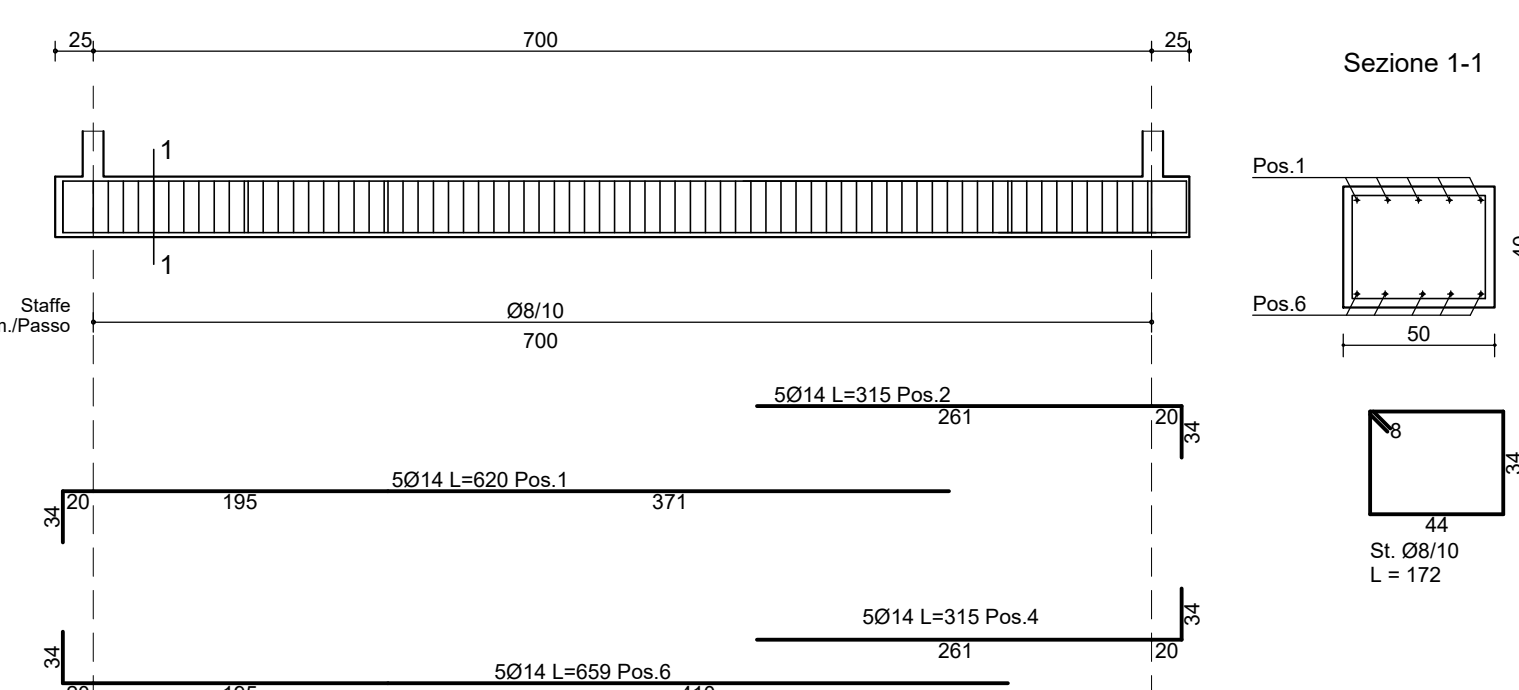
**TRAVE FILO 19 S.-N**  
scala 1:50



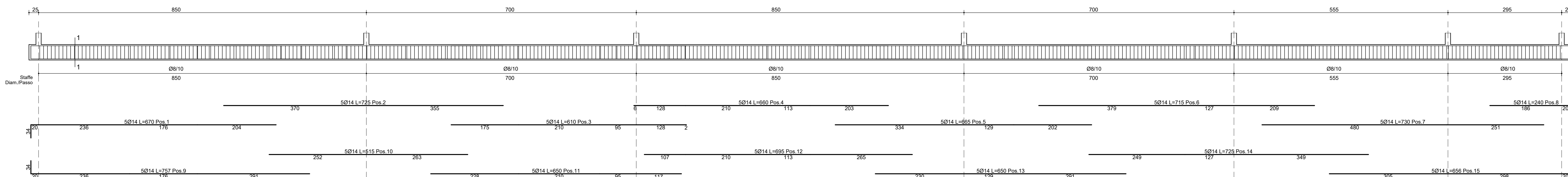
**TRAVE FILO R 21-22**  
scala 1:50



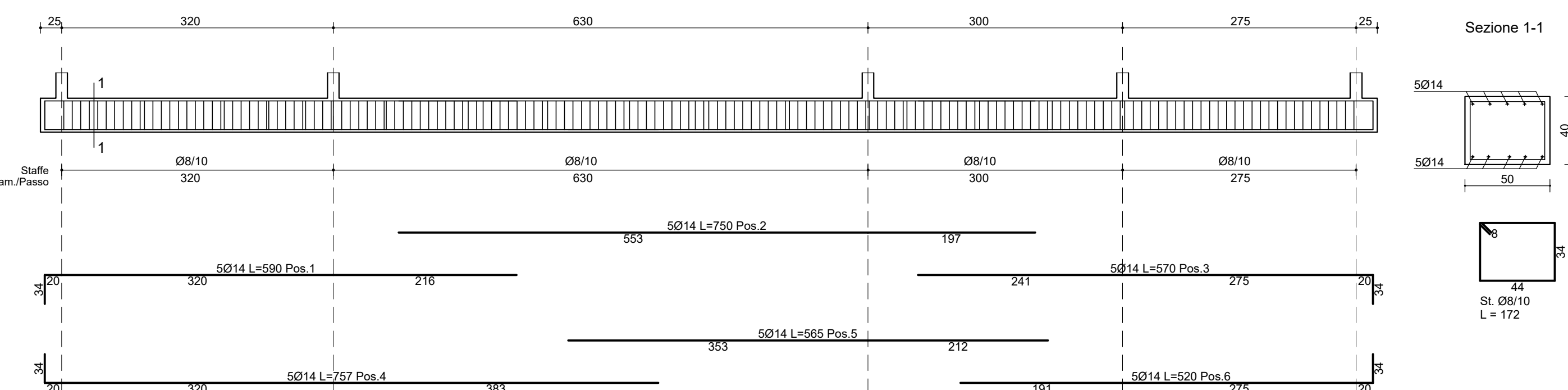
**TRAVE FILO R 23-24**  
scala 1:50



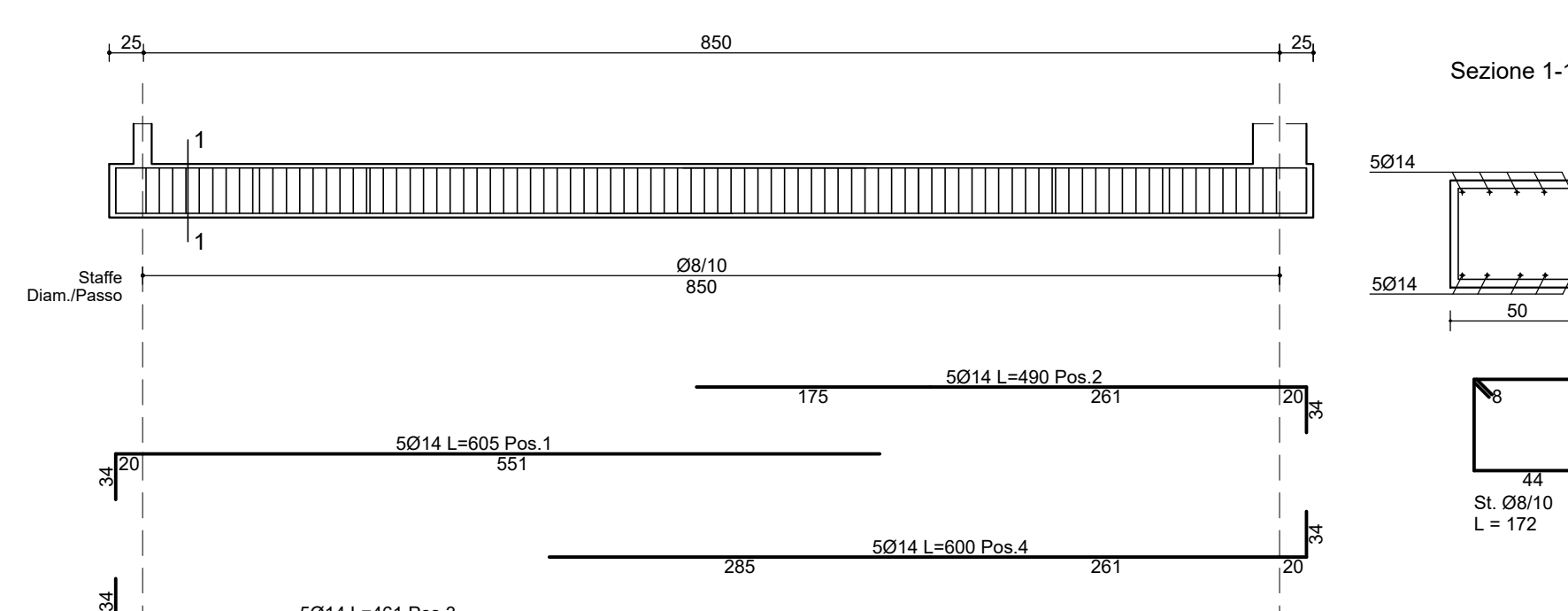
**TRAVE FILO Q 19.-26**  
scala 1:50



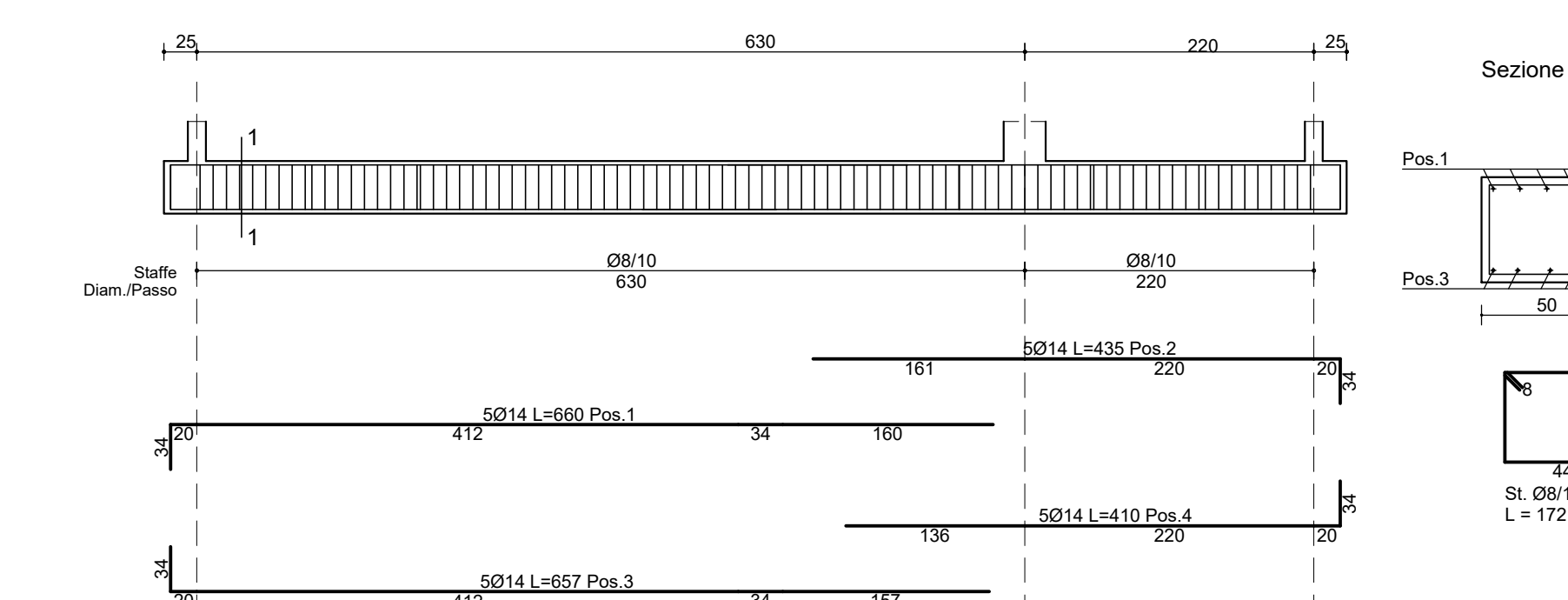
**TRAVE FILO 22 S.-O**  
scala 1:50



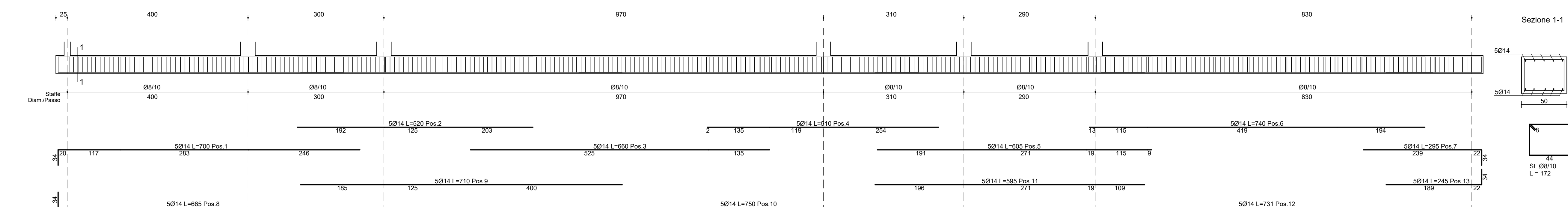
**TRAVE FILO P 22-23**  
scala 1:50



**TRAVE FILO N 19-21**  
scala 1:50

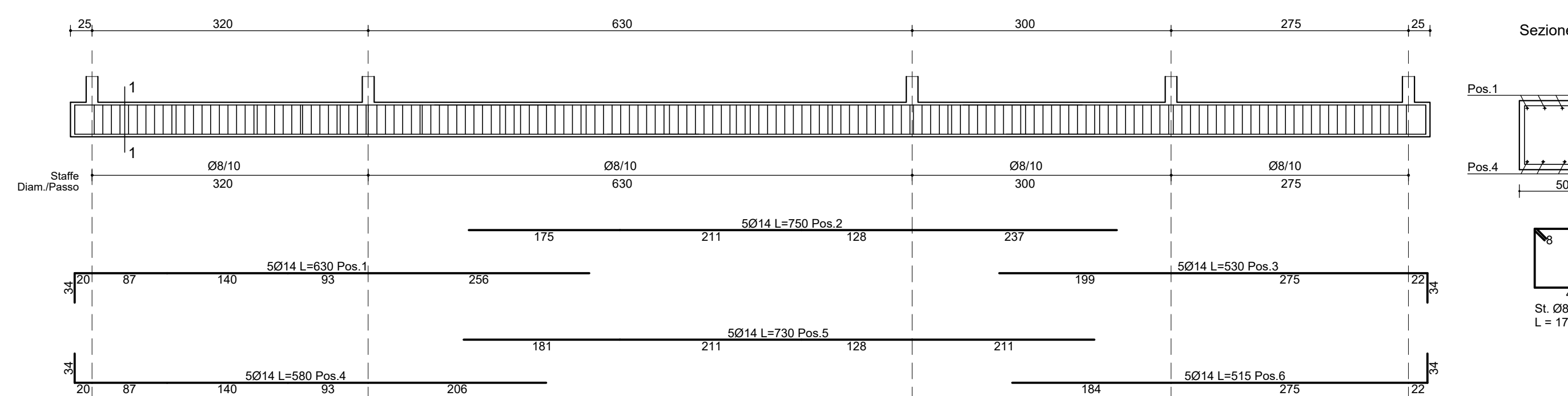


**TRAVE FILO O 21.-26**  
scala 1:50

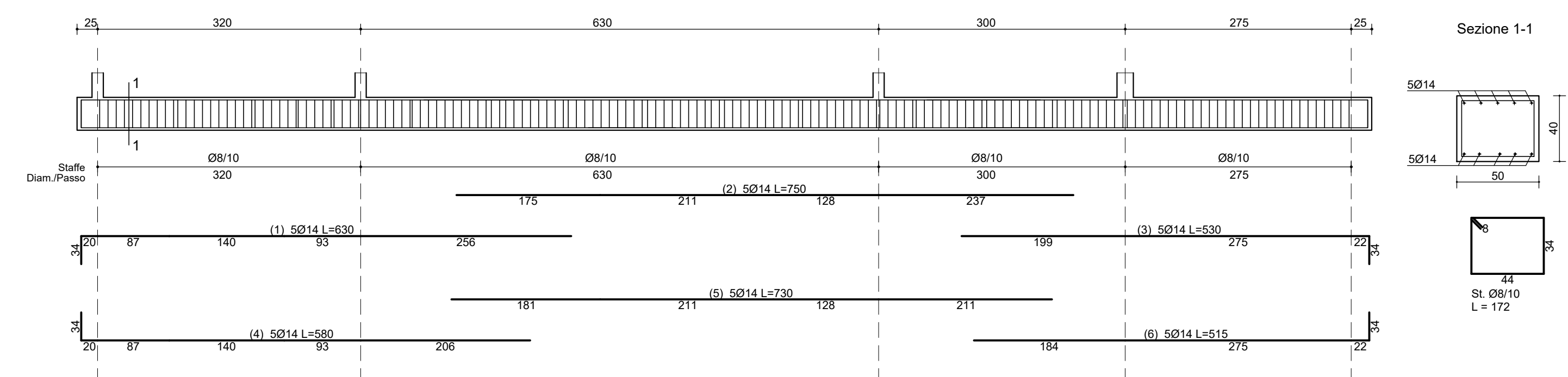


**CORPO A**  
scala 1:50

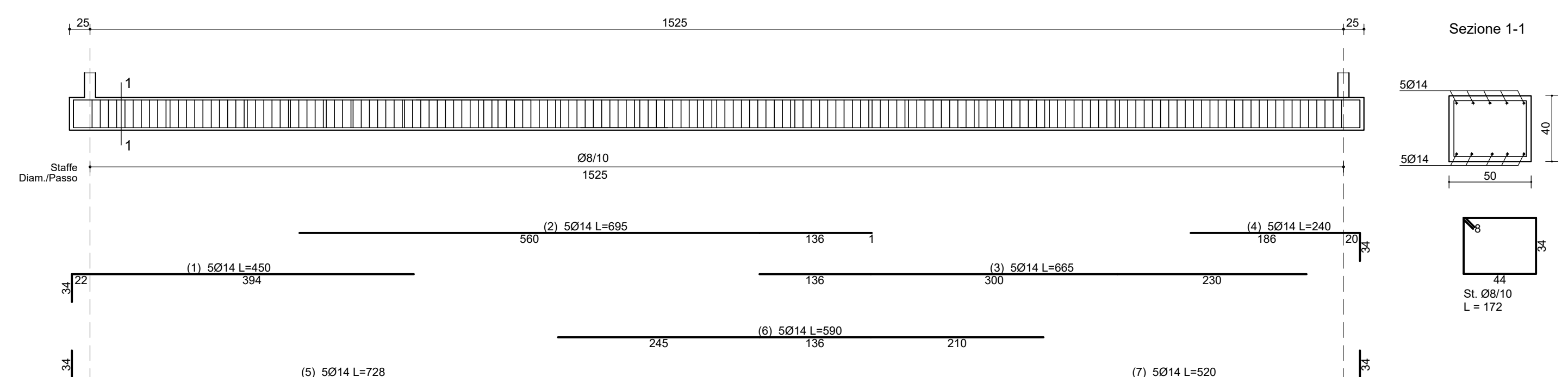
**TRAVE FILO 23 S.-O**  
scala 1:50



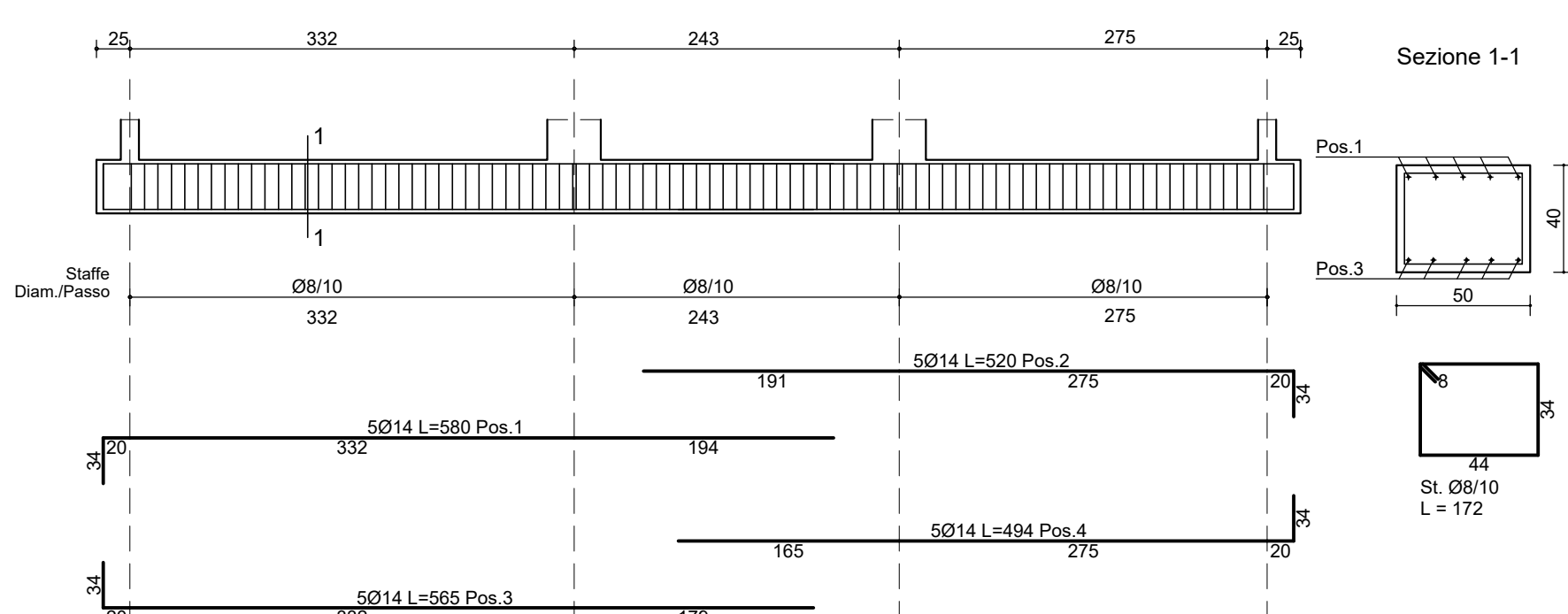
**TRAVE FILO 24 S.-O**  
scala 1:50



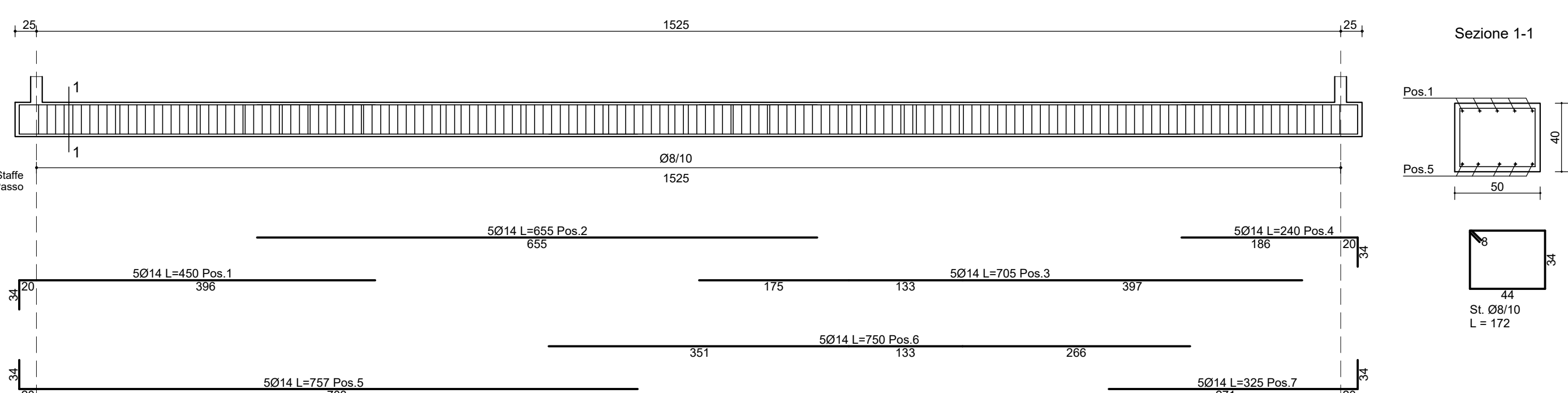
**TRAVE FILO 25 S.-O**  
scala 1:50



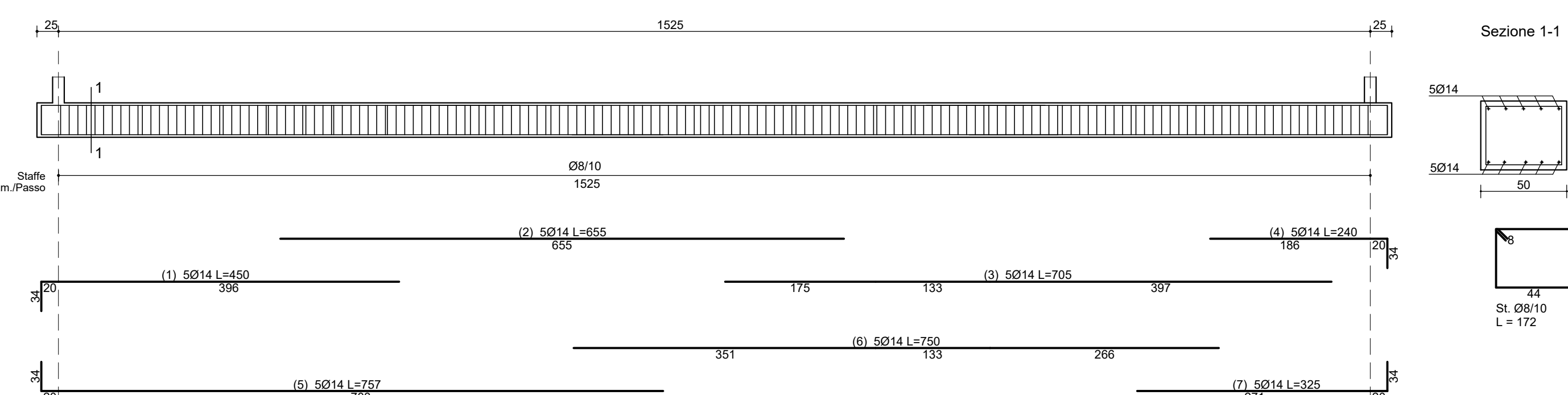
**TRAVE FILO 20 D.-N**  
scala 1:50



**TRAVE FILO 21 S.-N**  
scala 1:50



**TRAVE FILO 26 S.-O**  
scala 1:50

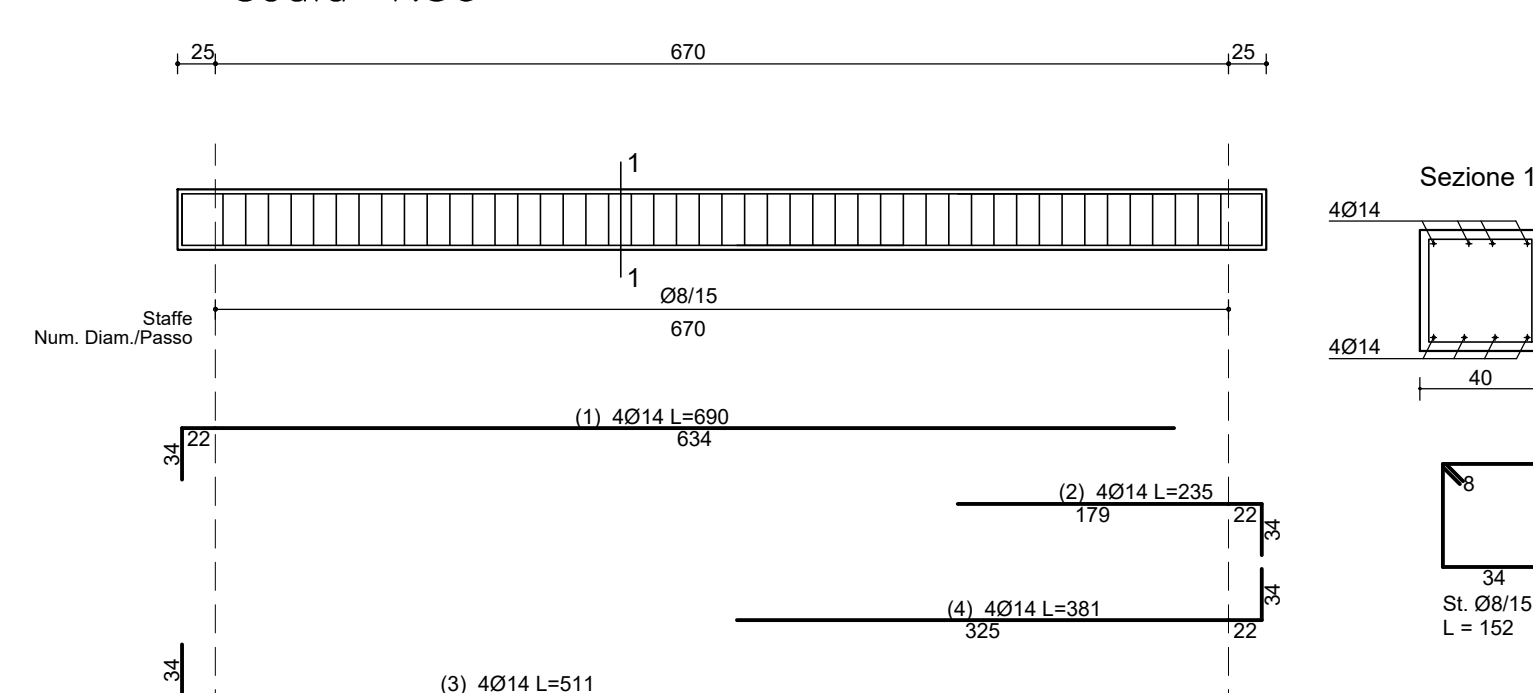


**TRAVE FILO O PIL28-PIL29**  
scala 1:50

**TRAVE PIL25-PIL26;PIL21-PIL20**  
scala 1:50

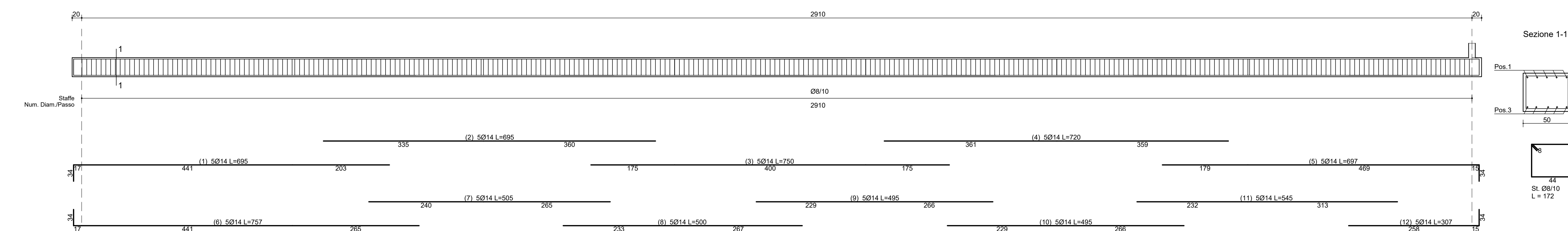
**TRAVE PIL17-PIL18;PIL13-PIL12**  
scala 1:50

**TRAVE PIL9-PIL8;PIL15-PIL14**  
scala 1:50

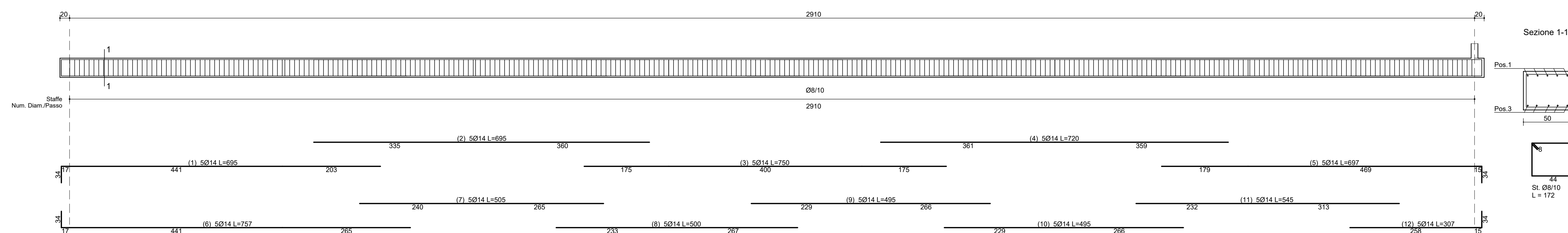


**PORTICO**  
scala 1:50

**TRAVE FILO 28 V2.-29**  
scala 1:50



**TRAVE FILO 27 V1.-28**  
scala 1:50



**NOTE E PRESCRIZIONI GENERALI**

- Prima di ogni getto avvisare il D.L. con almeno 36 ore di anticipo.
- Per una corretta posa delle sovrastanti pareti in XLAM è richiesta una tolleranza di planarità dell'estradosso delle travi di fondazione al di sotto degli 8 mm.

**MATERIALI**

- Calcestruzzo C28/35
- Classe di consistenza S4
- Classe di esposizione XC2
- Copriferro min 3 cm
- Diametro massimo aggregati Dmax 25mm
- Acciaio B450C
- Legno Setti XLAM: Legno C 24
- (per il calcolo sono stati utilizzati pannelli tipo Dolomiti X-LAM sp. 137 (33-19-33-19-33))
- Legno Travi Copertura: Legno GL 24h

**COMUNE DI CASTEL MAGGIORE**

**3° SETTORE LL. PP. E AMBIENTE**

**NUOVO POLO SCOLASTICO**

PROGETTO ESECUTIVO ai sensi del DPR 207/2010



**SCUOLA DELL'INFANZIA**

RESPONSABILE DEL PROCEDIMENTO  
Geom. LUCIA CAMPANA

COORDINAMENTO E PROGETTAZIONE ARCHITETONICA  
RTP ARCHITETTI ASSOCIATI  
PROGETTISTI  
Ing. Francesco Nicolardi  
Ing. Guido Panigati  
INGENIERI  
ARCHITETTI  
ING. FRANCESCO NICOLARDI  
ING. GUIDO PANIGATI  
CONSULENZA  
PROMOTORE  
TAVOLA  
ST.03  
DATA Dicembre 2017